

DLEU1/LAMP1 FISH Probe Kit

Introduction

The DLEU1/LAMP1 FISH Probe Kit is designed to simultaneously detect the human *DLEU1* and *LAMP1* genes, located on chromosome band 13q14.2 and 13q34, respectively. Deletions of varying lengths and other abnormalities in the locus for these two genes have been observed in lymphoid and myeloid leukemias as well as a number of solid tumor types.

Intended Use

To detect the human *DLEU1* and *LAMP1* genes, located on chromosomes band 13q14.2 and 13q34, respectively.

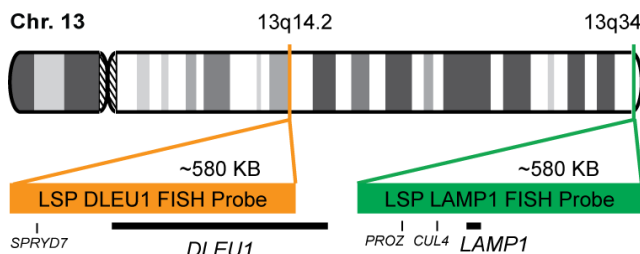
Cont.

LSP DLEU1 FISH Probe
LSP LAMP1 FISH Probe

Color

CytoOrange
CytoGreen

Probe Design



Not to Scale

LSP DLEU1 FISH Probe covers a chromosomal region which includes much of the *DLEU1* gene. LSP LAMP1 FISH Probe covers the *LAMP1* gene and sequences upstream and downstream of it. The probe set is optimized to reveal abnormalities in the two gene regions.

Cat. No.

CT-PAC488-10-OG

Volume

10 Tests (100 µL)

Signal Pattern Interpretation

Normal Patterns

202G

Abnormal Patterns

Other Patterns

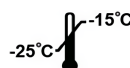
- 1) Elnenaei MO, et al. *Genes Chromosomes Cancer*. 36(1):99-106 (2003).
- 2) Stevens-Kroef M, et al. *Cancer Genet Cytogenet*. 195(2):97-104 (2009).
- 3) Taya Y. *Trends Biochem Sci*. 22(1):14-7 (1997).
- 4) Tsimberidou AM, et al. *Cancer*. 115(2):373-80 (2009).
- 5) Caraway NP, et al. *Cancer*. 2008 Oct 25;114(5):315-22 (2008).

* CE IVD only available in certain countries. All other countries are either ASR or RUO. Please contact your local dealer or our headquarters for more information.

DCN032

© CytoTest Inc.

www.cytotest.com



CytoTest Inc.
1395 Piccard Drive, Suite 308
Rockville, MD 20850, USA

V2024.09.01

T-07-10-PAC488-OG-EN