

CHD1/PTEN/LSAMP FISH Probe Kit

Introduction

The CHD1/PTEN/LSAMP FISH Probe Kit is designed to detect the human CHD1 gene on chromosome band 5q15, the PTEN gene on chromosome band 10q23.31, and the LSAMP gene on chromosome band 3q13.31. Abnormalities in CHD1 – also known as CHD-1 or PILBOS – abnormalities in PTEN – also known as BZS, DEC, CWS1, GLM2, MHAM, TEP1, MMAC1, PTEN1 or 10q23del – and abnormalities in LSAMP – also known as LAMP or IGLON3 – have been observed in aggressive prostate cancer and other tumor types. Microdeletions and polymorphisms of the LSAMP genomic region have been reported during analyses of some rare congenital neuropsychiatric and behavioral disorders. Due to localized chromosomal aberrations identified in osteosarcoma cell lines, LSAMP is suspected to be a tumor suppressor gene in osteosarcoma. A novel recurrent deletion of the LSAMP locus has recently been described in African American men and found to be associated with aggressive disease progression.

Intended Use

To measure the copy number of the human CHD1, PTEN and LSAMP genes located on chromosome bands 5q15, 10q23.31 and 3q13.31, respectively.

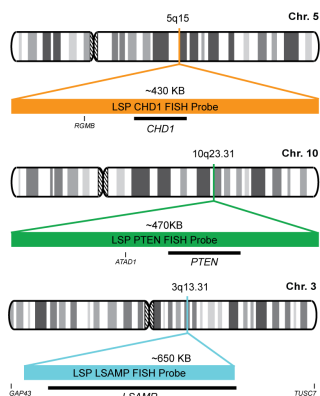
Cont.

Color

LSP CHD1 FISH Probe
LSP PTEN FISH Probe
LSP LSAMP FISH Probe

CytoOrange
CytoGreen
CytoAqua

Probe Design



Not to Scale

LSP CHD1 FISH Probe covers a chromosomal region which includes the entire *CHD1* gene. LSP PTEN FISH Probe covers a chromosomal region which includes the entire *PTEN* gene. LSP LSAMP FISH Probe covers a chromosomal region which includes the entire *LSAMP* gene.

Cat. No.

Volume

CT-PAC465-10-OGA

10 Tests (100 µL)

Signal Pattern Interpretation

Normal Patterns

2O2G2A

Abnormal Patterns

Other Patterns

- 1) Catania EH, et al. *Behav Brain Res*. 188(2):380-90 (2008).
- 2) Gimelli S, et al. *Mol Cytogenet*. 6(1):52 (2013).
- 3) Vuillaume ML, et al. *Mol Genet Metab*. 110(1-2):90-7 (2013).
- 4) Yen CC, et al. *Int J Oncol*. 35(4):775-88 (2009).
- 5) Petrovics G, et al. *EBioMedicine*. 2(12):1957-64 (2015).

* CE IVD only available in certain countries. All other countries are either ASR or RUO. Please contact your local dealer or our headquarters for more information.

DCN032

© CytoTest Inc.



CytoTest Inc.
1395 Piccard Drive, Suite 308
Rockville, MD 20850, USA