

SFTPA1/CCP10 FISH Probe Kit

Introduction

The SFTPA1/CCP10 FISH Probe Kit is designed to detect the human SFTPA1 gene located on chromosome band 10q22.3, along with the number of chromosome 10 copies per cell. Mutations in SFTPA1 – also known as SPA, ILD1, PSAP, PSPA, SP-A, SPA1, PSP-A, SFTP1, SP-A1, COLEC4, SFTPA1B, SP-A1 beta, SP-A1 delta, SP-A1 gamma or SP-A1 epsilon – are associated with idiopathic pulmonary fibrosis and other malignancies.

Intended Use

To measure the copy number of the human *SFTPA1* gene located on chromosome band 10q22.3.

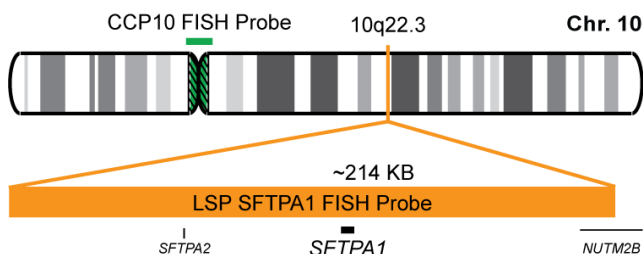
Cont.

Color

LSP SFTPA1 FISH Probe
CCP10 FISH Probe

CytoOrange
CytoGreen

Probe Design



Not to Scale

LSP SFTPA1 FISH Probe covers a chromosomal region, which includes the entire *SFTPA1* gene. CCP10 FISH Probe, derived from chromosome 10 specific alpha satellite DNA, is designed to serve as a control to determine the number of chromosome 10 copies per cell.

Cat. No.

Volume

CT-PAC468-10-OG

10 Tests (100 µL)

Signal Pattern Interpretation

Normal Patterns

202G

Abnormal Patterns

Other Patterns

- Yendamuri S, et al. J Thorac Oncol. 3(9):979-84 (2008).
- Shlomi D, et al. Cancer Genet. Oct;226-227:1-10 (2018).
- Katz RL, et al. Cancer Cytopathol. 128(8):553-562 (2020).
- Wang Q, et al. P23 Liquid Biopsy and Other Non-invasive Diagnostic Modalities - Screening and Early Detection. Issue 10, S1029 (2021).

* CE IVD only available in certain countries. All other countries are either ASR or RUO. Please contact your local dealer or our headquarters for more information.

DCN032

© CytoTest Inc.



CytoTest Inc.
1395 Piccard Drive, Suite 308
Rockville, MD 20850, USA