

CHD1/D5S23, D5S721 FISH Probe Kit

Introduction

The CHD1/D5S23, D5S721 FISH Probe Kit is designed to detect the human CHD1 gene located on chromosome band 5q15 and the D5S23-D5S721 marker region on chromosome band 5p15.2. Abnormalities in CHD1 occur in prostate cancer and other tumor types.

Intended Use

To measure the copy number of the human CHD1 gene located on chromosome band 5q15.

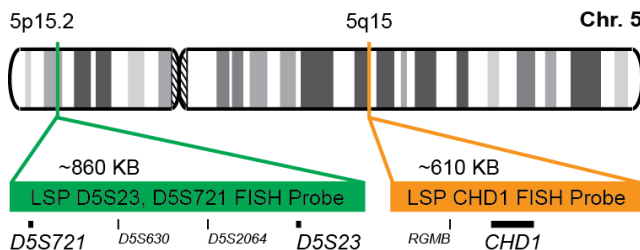
Cont.

Color

LSP CHD1 FISH Probe
LSP D5S23,D5S721 FISH Probe

CytoOrange
CytoGreen

Probe Design



LSP CHD1 FISH Probe covers a chromosomal region which includes the entire CHD1 gene. LSP D5S23, D5S721 FISH Probe covers genomic sequences around STS markers D5S23 and D5S721.

Not to Scale

Cat. No.

Volume

CT-PAC103-10-OG

10 Tests (100 µL)

Signal Pattern Interpretation

Normal Patterns

202G

Abnormal Patterns

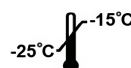
Other Patterns

- 1) O'Connor C. *Nature Education*. 1(1):171 (2008).
- 2) Tereshchenko IV, et al. *Prostate*. 74(15):1551-9 (2014).
- 3) Piatti P, et al. *Sci Rep*. 5:8007 (2015).
- 4) Fisher KW, et al. *Curr Drug Targets*. 16(2):103-14 (2015).
- 5) Yao H, et al. *Mol Cancer*. 14(1):81 (2015).

* CE IVD only available in certain countries. All other countries are either ASR or RUO. Please contact your local dealer or our headquarters for more information.

DCN032

© CytoTest Inc.



CytoTest Inc.
1395 Piccard Drive, Suite 308
Rockville, MD 20850, USA