

ARHGEF7/CCP13 FISH Probe Kit

Introduction

The ARHGEF7/CCP13 FISH Probe Kit is designed to detect the human *ARHGEF7* gene located on chromosome band 13q34 along with the number of CCP13 copies per cell. Mutations of this gene – also known as *P50*, *P85*, *PAK3*, *PIXB*, *COOL1*, *P50BP*, *COOL-1*, *P85SPR*, *BETA-PIX*, *P85COOL1* or *Nbla10314* – occur in cancers including colorectal, lung, breast, renal, and other malignancies.

Intended Use

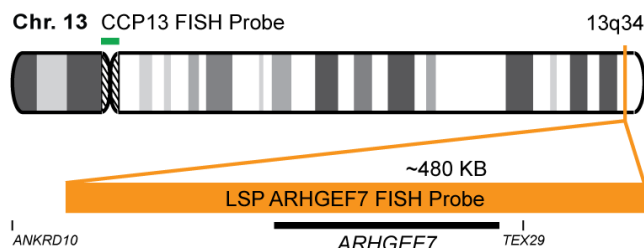
To measure the copy number of the human *ARHGEF7* gene located on chromosome band 13q34.

Cont.

Color

LSP ARHGEF7 FISH Probe CytoOrange
CCP13 (Pericentromeric) FISH Probe CytoGreen

Probe Design



Not to Scale

LSP ARHGEF7 FISH Probe covers a chromosomal region which includes the entire *ARHGEF7* gene and some flanking genomic sequences. CCP13 FISH probe is designed to serve as a control to determine the number of chromosome 13 copies per cell.

Cat. No.

Volume

CT-PAC399-10-OG

10 Tests (100 µL)

Signal Pattern Interpretation

Normal Patterns

2O2G

Abnormal Patterns

Other Patterns

- 1) Chahdi A & Raufman JP. *J Biol Chem*. 288(47):34019-34029 (2013).
- 2) Aghazadeh B, et al. *Nat Struct Biol*. 5(12):1098-107 (1998).
- 3) Stevens BM, et al. *Stem Cells*. 32(5):1124-35 (2014).
- 4) Bastos RN, et al. *J Cell Bio*. 198(5):865-80 (2012).
- 5) Valdes JL, et al. *J Biol Chem*. 286(45):39403-16 (2011).

* CE IVD only available in certain countries. All other countries are either ASR or RUO. Please contact your local dealer or our headquarters for more information.

DCN032

© CytoTest Inc.



CytoTest Inc.
1395 Piccard Drive, Suite 308
Rockville, MD 20850, USA