

DLEU1/RASA3 FISH Probe Kit

Introduction

The DLEU1/RASA3 FISH Probe Kit is designed to detect the human *DLEU1* gene, located on chromosomes band 13q14.2, and the *RASA3* gene on chromosome band 13q34. Rearrangements and abnormal expression of the *DLEU1* gene – also known as *BCMS*, *DLB1*, *LEU1*, *LEU2*, *XTP6*, *BCMS1*, *DLEU2*, *LINC00021* or *NCRNA00021* – have been observed in B-cell chronic lymphocytic leukemia (CLL), multiple myeloma (MM) and other malignancies. Amplification and deregulation of *RASA3* – also known as *GAP11* or *GAP1P4BP* – has been found in breast cancer and other tumor types.

Intended Use

To measure the copy number of the human *DLEU1* and *RASA3* genes located on chromosome bands 13q14.2 and 13q34, respectively.

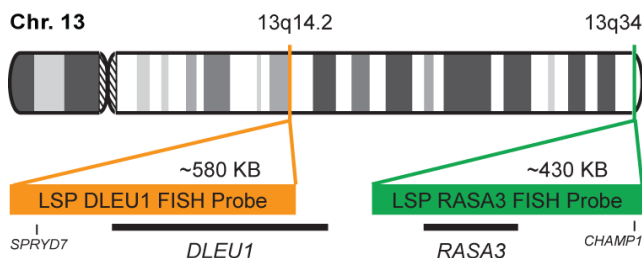
Cont.

LSP DLEU1 FISH Probe
LSP RASA3 FISH Probe

Color

CytoOrange
CytoGreen

Probe Design



Not to Scale

LSP DLEU1 FISH Probe covers the center sequences and the 5' (start) portion of the *DLEU1* gene and some adjacent genomic sequences. LSP RASA3 FISH Probe covers a chromosomal region which includes the entire *RASA3* gene.

Cat. No.

CT-PAC165-10-OG

Volume

10 Tests (100 µL)

Signal Pattern Interpretation

Normal Patterns

202G

Abnormal Patterns

Other Patterns

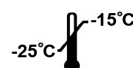
- 1) Elnenaei MO, et al. *Genes Chromosomes Cancer*. 36(1):99-106 (2003).
- 2) Stevens-Kroef M, et al. *Cancer Genet Cytogenet*. 195(2):97-104 (2009).
- 3) Konialis C, et al. *Hematology*. 19(4):217-24 (2014).
- 4) Chen SJ, et al. *J Clin Invest*. 91(5):2260-7 (1993).
- 5) Licht JD, et al. *Oncogene*. 12(2):323-36 (1996).

* CE IVD only available in certain countries. All other countries are either ASR or RUO. Please contact your local dealer or our headquarters for more information.

DCN032

© CytoTest Inc.

www.cytotest.com



CytoTest Inc.
1395 Piccard Drive, Suite 308
Rockville, MD 20850, USA

V2023.01.01

T-07-10-PAC165-OG-EN