

## CDK4/CCP12 FISH Probe Kit

### Introduction

The CDK4/CCP12 FISH Probe Kit is designed to detect the human CDK4 gene located on chromosome band 12q14.1, along with the number of chromosome 12 copies per cell. Abnormalities in CDK4 – also known as CMM3 or PSK-J3 – occur in gliomas and sarcoma and in various other familial or sporadic tumor types.

### Intended Use

To measure the copy number of the human *CDK4* gene located on chromosome band 12q14.1.

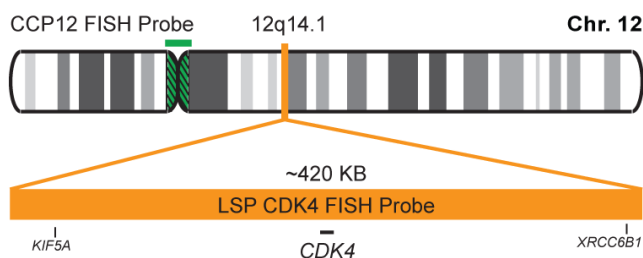
### Cont.

LSP CDK4 FISH Probe  
CCP12 FISH Probe

### Color

CytoOrange  
CytoGreen

### Probe Design



Not to Scale

LSP CDK4 FISH Probe covers a chromosomal region which includes the entire *CDK4* gene. CCP12 FISH Probe, derived from chromosome 12-specific alpha satellite DNA, is designed to serve as a control to determine the number of chromosome 12 copies per cell.

### Cat. No.

CT-PAC048-10-OG

### Volume

10 Tests (100 µL)

### Signal Pattern Interpretation

#### Normal Patterns

202G

#### Abnormal Patterns

Other Patterns

- 1) Khatib ZA, et al. *Cancer Res.* 53(22):5535-41 (1993).
- 2) Reifemberger G, et al. *Cancer Res.* 54(16):4299-303 (1994).
- 3) Sehgal A. *Semin Surg Oncol.* 14(1):3-12 (1998).
- 4) Soufir N, et al. *Hum Mol Genet.* 7(2):209-16 (1998).
- 5) Curtin JA, et al. *N Engl J Med.* 353(20):2135-47 (2005).

\* CE IVD only available in certain countries. All other countries are either ASR or RUO. Please contact your local dealer or our headquarters for more information.

DCN032

© CytoTest Inc.



CytoTest Inc.  
1395 Piccard Drive, Suite 308  
Rockville, MD 20850, USA