

DLEU1/ZBTB16 FISH Probe Kit

Introduction

The DLEU1/ZBTB16 FISH Probe Kit is designed to detect the human DLEU1 gene, located on chromosome band 13q14.2, and the ZBTB16 gene on chromosome band 11q23.2. Rearrangements and abnormal expression of the DLEU1 gene region – also known as BCMS, DLB1, LEU1, LEU2, XTP6, BCMS1, DLEU2, LINC00021 or NCRNA00021 – have been observed in B-cell chronic lymphocytic leukemia (CLL), multiple myeloma (MM) and other malignancies. Fusions and aberrant expression of the ZBTB16 gene – also known as PLZF or ZNF145 – have been reported in acute promyelocytic leukemia and other neoplasias.

Intended Use

To measure the copy number of the human *DLEU1* and *ZBTB16* genes located on chromosome bands 13q14.2 and 11q23.2, respectively.

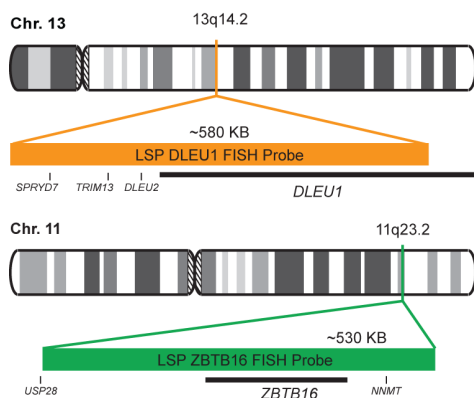
Cont.

Color

LSP DLEU1 FISH Probe
LSP ZBTB16 FISH Probe

CytoOrange
CytoGreen

Probe Design



LSP DLEU1 FISH Probe covers a chromosomal region which includes the majority of the *DLEU1* gene and genomic sequences adjacent to the 5' end of the gene. LSP ZBTB16 FISH Probe covers a chromosomal region which includes the entire *ZBTB16* gene.

Cat. No.

Volume

CT-PAC161-10-OG

10 Tests (100 µL)

Signal Pattern Interpretation

Normal Patterns

202G

Abnormal Patterns

Other Patterns

- 1) Elnenaei MO, et al. *Genes Chromosomes Cancer*. 36(1):99-106 (2003).
- 2) Stevens-Kroef M, et al. *Cancer Genet Cytogenet*. 195(2):97-104 (2009).
- 3) Konialis C, et al. *Hematology*. 19(4):217-24 (2014).
- 4) Chen SJ, et al. *J Clin Invest*. 91(5):2260-7 (1993).
- 5) Licht JD, et al. *Oncogene*. 12(2):323-36 (1996).

* CE IVD only available in certain countries. All other countries are either ASR or RUO. Please contact your local dealer or our headquarters for more information.

DCN032

© CytoTest Inc.



CytoTest Inc.
1395 Piccard Drive, Suite 308
Rockville, MD 20850, USA