

## CCP13, 18 FISH Probe Kit

### Introduction

This CytoTest FISH probe set is designed to simultaneously determine the copy number of human chromosomes 13 and 18, and to detect copy number aberrations in these chromosomes, in metaphase and interphase blood and tissue cells. The panel contains two different probes:  
CCP18 is derived from chromosome 18 specific centromeric (18p11.1-q11.1) alpha satellite DNA (D18Z1).  
CCP13 is a probe spanning the RB1 gene on 13q14 and adjacent sequences.

### Intended Use

To determine the copy number of human chromosomes 13 and 18, and to detect copy number aberrations in these chromosomes, in metaphase and interphase blood and tissue cells.

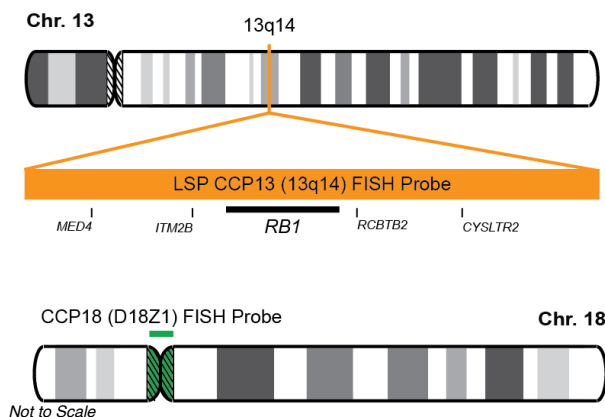
### Cont.

### Color

CCP13 (13q14) FISH Probe  
CCP18 FISH Probe

CytoOrange  
CytoGreen

### Probe Design



CCP13 FISH Probe covers chromosomal sequences around 13q14 banding region. CCP18 FISH Probe is derived from chromosome 18-specific alpha satellite DNA.

### Cat. No.

### Volume

CT-PAC343-10-OG

10 Tests (100 µL)

### Signal Pattern Interpretation

#### Normal Patterns

202G

#### Abnormal Patterns

Other Patterns

- 1) Schwartz S. Am J Hum Genet 52:851-853 (1993).
- 2) Lewin P, et al. Prenat Diagn 20(1):1-6 (2000).
- 3) Tepperberg J, et al. Prenat Diagn 21(4):293-301 (2001).
- 4) ACMG/ASHG. Genetics in Medicine 2(6):356 – 361 (2000).
- 5) Stumm M, et al. Cytogenet Genome Res 114(3-4):296-301 (2006).

\* CE IVD only available in certain countries. All other countries are either ASR or RUO. Please contact your local dealer or our headquarters for more information.

DCN032

© CytoTest Inc.



CytoTest Inc.  
1395 Piccard Drive, Suite 308  
Rockville, MD 20850, USA