

ANOS1/CCPX FISH Probe Kit

Introduction

The ANOS1/CCPX FISH Probe Kit is designed to detect the human ANOS1 gene located on chromosome band Xp22.31, along with the number of chromosome X copies per cell. Abnormal expression or rearrangements in the ANOS1 gene – also known as KAL, ADMLX, or KAL1 – region (Kallmann Region) are associated with Kallmann Syndrome.

Intended Use

To measure the copy number of the human ANOS1 gene located on chromosome band Xp22.31.

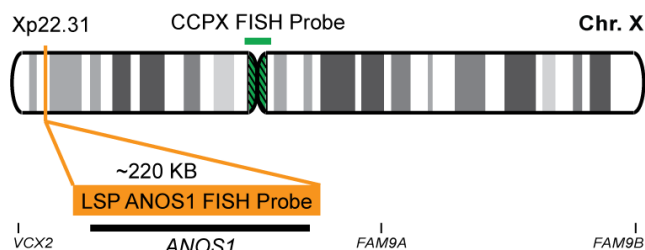
Cont.

Color

LSP ANOS1 FISH Probe
CCPX FISH Probe

CytoOrange
CytoGreen

Probe Design



LSP ANOS1 FISH Probe covers a chromosomal region which includes the entire ANOS1 gene. CCPX FISH Probe, derived from chromosome X-specific alpha satellite DNA, is designed to serve as a control to determine the number of chromosome X copies per cell but is also useful in detecting gene rearrangements involving the X chromosome.

Not to Scale

Cat. No.

Volume

CT-PAC477-10-OG

10 Tests (100 µL)

Signal Pattern Interpretation

Normal Patterns

1O1G (Male)
2O2G (Female)

Abnormal Patterns

Other Patterns

- 1) Hardelin JP. Mol Cell Endocrinol. 179(1-2):75-81 (2001).
- 2) Hardelin JP, et al. Adv Otorhinolaryngol. 56:268-74 (2000).
- 3) Dode C & Hardelin JP. Ann Endocrinol (Paris). 71(3):149-57 (2010).
- 4) Cadman SM, et al. Horm Res. 67(5):231-42 (2007).
- 5) Dode C & Hardelin JP. J Mol Med (Berl). 82(11):725-34 (2004).

* CE IVD only available in certain countries. All other countries are either ASR or RUO. Please contact your local dealer or our headquarters for more information.

DCN032

© CytoTest Inc.



CytoTest Inc.
1395 Piccard Drive, Suite 308
Rockville, MD 20850, USA