

CCP13, 16, 18, 21, 22 FISH Probe Kit

Introduction

The CCP13,16,18,21,22 FISH Probe Kit is designed to simultaneously determine the copy number of human chromosomes 13, 16, 18, 21 and 22, and to detect copy number aberrations in these chromosomes, in metaphase and interphase blood and tissue cells.

Intended Use

To determine the copy number of human chromosomes 13, 16, 18, 21 and 22, and to detect copy number aberrations in these chromosomes.

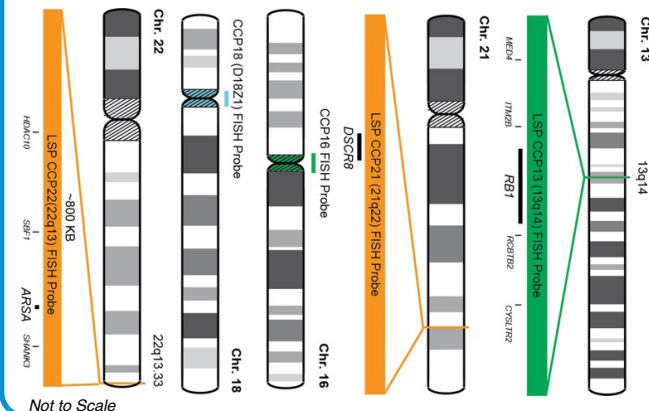
Cont.

Vial 1: CCP13 (13q14) FISH Probe
CCP21 (21q22) FISH Probe
Vial 2: CCP16 (Pericentromeric) FISH Probe
CCP18 FISH Probe
CCP22 (22q13) FISH Probe

Color

CytoGreen
CytoOrange
CytoGreen
CytoAqua
CytoOrange

Probe Design



CCP13 FISH Probe covers chromosomal sequences around 13q14 banding region.
CCP21 FISH Probe covers around 21q22.2 location.
CCP16 FISH Probe is designed to determine the number of chromosome 16 copies per cell.
CCP18 FISH Probe is derived from chromosome 18-specific alpha satellite DNA.
CCP22 FISH Probe covers chromosomal sequences around 22q13.33 location.

Cat. No.

CT-PAC250-10-GGAAO

Volume

10 Tests (100 µL)

Signal Pattern Interpretation

Normal Patterns

Vial 1: 2G2O
Vial 2: 2G2A2O

Abnormal Patterns

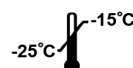
Other Patterns

- 1) Schwartz S. Am J Hum Genet 52:851-853 (1993).
- 2) Lewin P, et al. Prenat Diagn 20(1):1-6 (2000).
- 3) Tepperberg J, et al. Prenat Diagn 21(4):293-301 (2001).
- 4) ACMG/ASHG. Genetics in Medicine 2(6):356 – 361 (2000).
- 5) Stumm M, et al. Cytogenet Genome Res 114(3-4):296-301 (2006).

* CE IVD only available in certain countries. All other countries are either ASR or RUO. Please contact your local dealer or our headquarters for more information.

DCN032

© CytoTest Inc.



CytoTest Inc.
1395 Piccard Drive, Suite 308
Rockville, MD 20850, USA