

RB1/CCP11 FISH Probe Kit

Introduction

The RB1/CCP11 FISH Probe Kit is designed to detect the human RB1 gene located on chromosome band 13q14.2, along with the number of chromosome 11 copies per cell. Abnormal expression of the RB1 gene – also known as RB, pRb, OSRC, pp110, p105-Rb or PPP1R130 – and aneuploidy of the chromosome 11 have been observed in retinoblastoma, sarcomas and various other heritable and somatic tumor types. Concurrent deletions of RB1 and the 11q chromosome arm are frequent in some B-cell lymphomas.

Intended Use

To measure the copy number of the human chromosome 11 and *RB1* gene located on chromosome band 13q14.2.

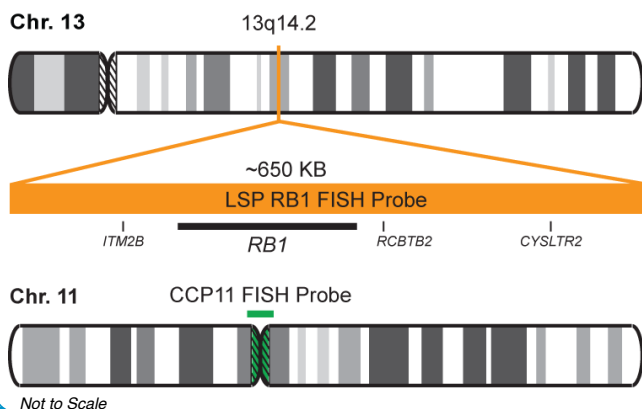
Cont.

LSP RB1 FISH Probe
CCP11 FISH Probe

Color

CytoOrange
CytoGreen

Probe Design



LSP RB1 FISH Probe covers a chromosomal region which includes the entire *RB1* gene. CCP11 FISH Probe, derived from chromosome 11-specific alpha satellite DNA, is designed to determine the number of chromosome 11 copies per cell.

Cat. No.

CT-PAC198-10-OG

Volume

10 Tests (100 µL)

Signal Pattern Interpretation

Normal Patterns

202G

Abnormal Patterns

Other Patterns

- 1) Toguchida J, et al. *Genomics*. 17(3):535-43 (1993).
- 2) Weinberg RA. *Cell*. 81(3):323-30 (1995).
- 3) Taya Y. *Trends Biochem Sci*. 22(1):14-7 (1997).
- 4) Tsimberidou AM, et al. *Cancer*. 115(2):373-80 (2009).
- 5) Caraway NP, et al. *Cancer*. 2008 Oct 25;114(5):315-22 (2008).

* CE IVD only available in certain countries. All other countries are either ASR or RUO. Please contact your local dealer or our headquarters for more information.

DCN032

© CytoTest Inc.



CytoTest Inc.
1395 Piccard Drive, Suite 308
Rockville, MD 20850, USA