

## ZNF595/CCP4 FISH Probe Kit

### Introduction

The ZNF595/CCP4 FISH Probe Kit is designed to detect the human ZNF595 gene located on chromosome band 4p16.3, along with the number of chromosome 4 copies per cell. This gene encodes a protein belonging to the Cys2His2 zinc finger protein family, whose members function as transcription factors that can regulate a broad variety of developmental and cellular processes.

### Intended Use

To measure the copy number of the human *ZNF595* gene located on chromosome band 4p16.3.

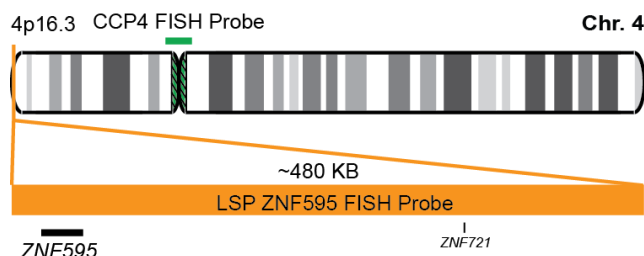
### Cont.

### Color

LSP ZNF595 FISH Probe  
CCP4 FISH Probe

CytoOrange  
CytoGreen

### Probe Design



Not to Scale

LSP ZNF595 FISH Probe covers a chromosomal region, which includes the entire *ZNF595* gene. CCP4 FISH Probe, derived from chromosome 4 specific alpha satellite DNA, is designed to serve as a control to determine the number of chromosome 4 copies per cell.

### Cat. No.

### Volume

CT-PAC264-10-OG

10 Tests (100 µL)

### Signal Pattern Interpretation

#### Normal Patterns

202G

#### Abnormal Patterns

Other Patterns

- 1) Berg JM. *Annu Rev Biophys Biophys Chem.* 19:405-21 (1990).
- 2) Razin SV, et al. *Biochemistry (Mosc).* 77(3):217-26 (2012).
- 3) Miyamoto-Sato E, et al. *PLoS One.* 5(2):e9289 (2010).
- 4) Kimura K, et al. *Genome Res.* 16(1):55-65 (2006).
- 5) Huttlin E, et al. *Cell.* 184(11):3022-3040 (2021).

\* CE IVD only available in certain countries. All other countries are either ASR or RUO. Please contact your local dealer or our headquarters for more information.

DCN032

© CytoTest Inc.



CytoTest Inc.  
1395 Piccard Drive, Suite 308  
Rockville, MD 20850, USA