

EGFR/CCP7 FISH Probe Kit

Introduction

The EGFR/CCP7 FISH Probe Kit is designed to detect the human *EGFR* gene located on chromosome band 7p11.2, along with the number of chromosome 7 copies per cell. Abnormal expression of the *EGFR* gene – also known as *TIS8*, *AT225*, *G0S30*, *NGFI-A*, *ZNF225*, *KROX-24* or *ZIF-268* – has been observed in leukemia, fibrosarcoma, lung, breast, brain, liver, skin, prostate and other tumor types.

Intended Use

To measure the copy number of the human *EGFR* gene located on chromosome band 7p11.2.

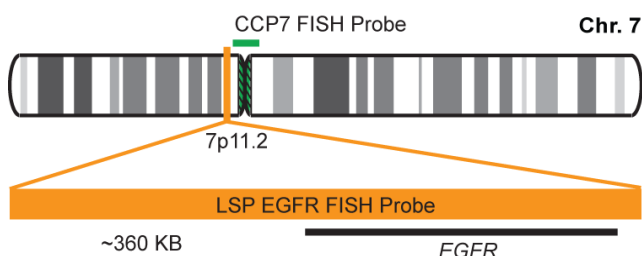
Cont.

Color

LSP EGFR FISH Probe
CCP7 FISH Probe

CytoOrange
CytoGreen

Probe Design



LSP EGFR FISH Probe covers a chromosomal region which includes the entire *EGFR* gene. CCP7 FISH Probe, derived from chromosome 1-specific alpha satellite DNA, is designed to serve as a control to determine the number of chromosome 1 copies per cell.

Cat. No.

Volume

CT-PAC011-10-OG

10 Tests (100 µL)

Signal Pattern Interpretation

Normal Patterns

2O2G

Abnormal Patterns

Other Patterns

- 1) Ullrich A & Schlessinger J. *Cell*. 61(2):203-12 (1990).
- 2) Hirsch FR, et al. *J Clin Oncol*. 21(20):3798-807 (2003).
- 3) Yu HA & Riely GJ. *J Natl Compr Canc Netw*. 11(2):161-9 (2013).
- 4) Grob TJ, et al. *Lung Cancer*. 79(3):221-7 (2013).
- 5) El-Zammar OA, et al. *Diagn Mol Pathol*. 18(3):133-7 (2009)

* CE IVD only available in certain countries. All other countries are either ASR or RUO. Please contact your local dealer or our headquarters for more information.

DCN032

© CytoTest Inc.



CytoTest Inc.
1395 Piccard Drive, Suite 308
Rockville, MD 20850, USA