

PDGFRA/CCP4 FISH Probe Kit

Introduction

The PDGFRA/CCP4 FISH Probe Kit is designed to detect the human PDGFRA gene located on chromosome band 4q12, along with the number of chromosome 4 copies per cell. Rearrangements and abnormal expression of the PDGFRA gene – also known as CD140A, PDGFR2, PDGFR-2 or RHEPDGFRA – have been observed in gastrointestinal stromal tumors (GIST), lung adenocarcinoma and other hematologic and solid tissue disorders.

Intended Use

To measure the copy number of the human *PDGFRA* gene located on chromosome band 4q12.

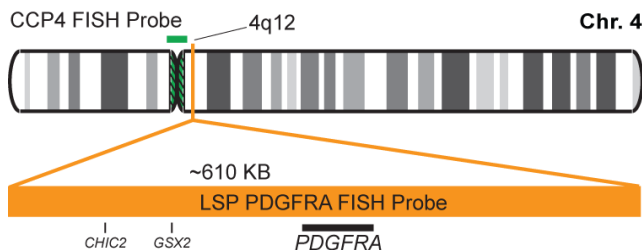
Cont.

Color

LSP PDGFRA FISH Probe
CCP4 FISH Probe

CytoOrange
CytoGreen

Probe Design



LSP PDGFRA FISH Probe covers a chromosomal region which includes the entire *PDGFRA* gene. CCP4 FISH Probe, derived from chromosome 4-specific alpha satellite DNA, is designed to serve as a control to determine the number of chromosome 4 copies per cell.

Not to Scale

Cat. No.

Volume

CT-PAC092-10-OG

10 Tests (100 µL)

Signal Pattern Interpretation

Normal Patterns

202G

Abnormal Patterns

Other Patterns

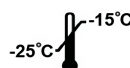
- 1) Gronwald RG, et al. *Hum Genet.* 85(3):383-5 (1990).
- 2) Lasota J & Miettinen M. *Histopathology.* 53(3):245-66 (2008).
- 3) Demoulin JB & Montano-Almendras CP. *Am J Blood Res.* 2(1):44-56 (2012).
- 4) Seo JS, et al. *Genome Res.* 22(11):2109-19 (2012).
- 5) Jain N, et al. *Blood.* 122(19):3387-8 (2013).

* CE IVD only available in certain countries. All other countries are either ASR or RUO. Please contact your local dealer or our headquarters for more information.

DCN032

© CytoTest Inc.

www.cytotest.com



CytoTest Inc.
1395 Piccard Drive, Suite 308
Rockville, MD 20850, USA

V2024.01.01

T-07-10-PAC092-OG-EN