

CISD2/CCP4 FISH Probe Kit

Introduction

The CISD2/CCP4 FISH Probe Kit is designed to detect the human CISD2 gene located on chromosome band 4q24, along with the number of chromosome 4 copies per cell. Abnormalities in CISD2 – also known as ERIS, WFS2, ZCD2, NAF-1 or Miner1 – have been observed in liver cancer and other malignancies. The gene has been associated with Wolfram Syndrome.

Intended Use

To measure the copy number of the human *CISD2* gene located on chromosome band 4q24.

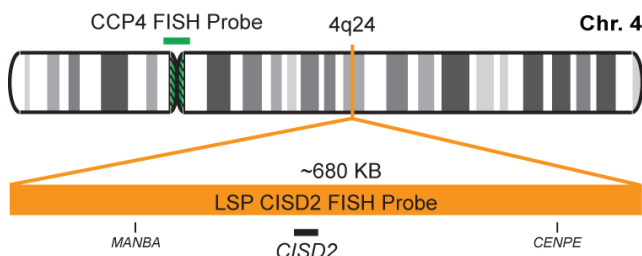
Cont.

Color

LSP CISD2 FISH Probe
CCP4 FISH Probe

CytoOrange
CytoGreen

Probe Design



LSP CISD2 FISH Probe covers a chromosomal region which includes the entire *CISD2* gene. CCP4 FISH Probe, derived from chromosome 4-specific alpha satellite DNA, is designed to serve as a control to determine the number of chromosome 4 copies per cell.

Not to Scale

Cat. No.

Volume

CT-PAC024-10-OG

10 Tests (100 µL)

Signal Pattern Interpretation

Normal Patterns

202G

Abnormal Patterns

Other Patterns

- 1) Chen YF, et al. *Ann N Y Acad Sci.* 1201:58-64 (2010).
- 2) Rigoli L & Di Bella C. *Curr Opin Pediatr.* 24(4):512-7 (2012).
- 3) Wang CH, et al. *Hum Mol Genet.* 23(18):4770-85 (2014).
- 4) Wang CH, et al. *Free Radic Res.* 48(9):1109-14 (2014).
- 5) Liu L, et al. *Med Oncol.* 31(9):183 (2014).

* CE IVD only available in certain countries. All other countries are either ASR or RUO. Please contact your local dealer or our headquarters for more information.

DCN032

© CytoTest Inc.



CytoTest Inc.
1395 Piccard Drive, Suite 308
Rockville, MD 20850, USA