

TLX3 Break Apart FISH Probe Kit

Introduction

The TLX3 Break Apart FISH Probe Kit is designed to detect rearrangements in the human TLX3 gene located on chromosome band 5q35.1. In addition to revealing breaks, which can lead to translocation of parts of the gene, inversion, or its fusion to other genes, the probe set can also be used to identify other TLX3 aberrations such as deletions or amplifications. Rearrangements and abnormal expression of the TLX3 gene – also known as RNK or HOX11L2 – have been observed in acute lymphocytic leukemia, bladder cancer and other malignancies.

Intended Use

To detect rearrangements in the human *TLX3* gene located on chromosome band 5q35.1.

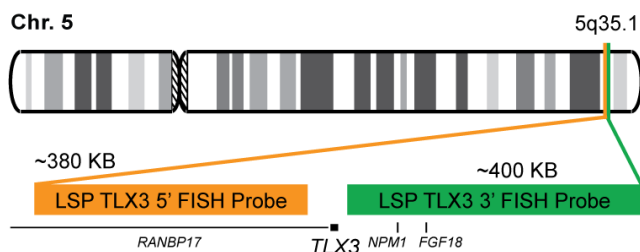
Cont.

Color

LSP TLX3 5' FISH Probe
LSP TLX3 3' FISH Probe

CytoOrange
CytoGreen

Probe Design



Not to Scale

LSP TLX3 5' FISH Probe covers some genomic sequences adjacent to the 5' end of the *TLX3* gene. LSP TLX3 3' FISH Probe covers some sequence downstream of the 3' end of the gene. The two probes are flanking sequences across the *TLX3* gene in which variable breakpoints have been observed.

Cat. No.

Volume

CT-PAC480-10-OG

10 Tests (100 µL)

Signal Pattern Interpretation

Normal Patterns

2F*

Abnormal Patterns

Other Patterns

*Overlapping orange and green signals can appear as yellow.

1) Ma J, et al. Tumour Biol. 35(9):8439-43 (2014).
2) Tada Y, et al. Int J Oncol. 39(3):727-33 (2011).
3) Ballerini P, et al. Leukemia. 19(3):468-70 (2005).
4) Berger R, et al. Leukemia. 17(9):1851-7 (2003).
5) Mauvieux L, et al. Leukemia. 16(12):2417-22 (2002).

* CE IVD only available in certain countries. All other countries are either ASR or RUO. Please contact your local dealer or our headquarters for more information.