

MDM2/CCP12 FISH Probe Kit

Introduction

The MDM2/CCP12 FISH probe kit can detect human MDM2 gene (chromosome 12q15) and copy number of chromosome 12. The abnormal expression of the above gene (MDM2 gene, HDMX, HDM2 or ACTFS) can be seen in soft tissue sarcoma and osteosarcoma.

Intended Use

To measure the copy number of the human *MDM2* gene located on chromosome band 12q15.

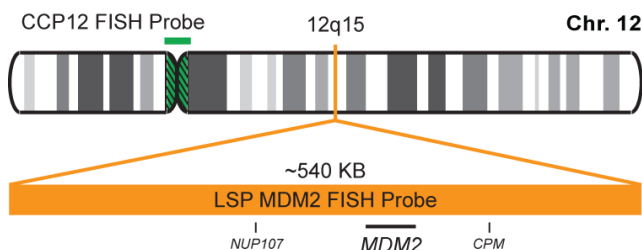
Cont.

Color

LSP MDM2 FISH Probe
CCP12 FISH Probe

CytoOrange
CytoGreen

Probe Design



Not to Scale

LSP MDM2 FISH Probe covers a chromosomal region which includes the entire *MDM2* gene. CCP12 FISH Probe, derived from chromosome 12-specific alpha satellite DNA, is designed to serve as a control to determine the number of chromosome 12 copies per cell.

Cat. No.

Volume

CT-PAC019-10-OG

10 Tests (100 µL)

Signal Pattern Interpretation

Normal Patterns

202G

Abnormal Patterns

Other Patterns

- 1) Oliner JD, et al. *Nature*. 358(6381):80-3 (1992).
- 2) Watanabe T, et al. *Leuk Lymphoma*. 21(5-6):391-7 (1996)
- 3) Honda R, et al. *FEBS Lett*. 420(1):25-7 (1997).
- 4) Momand J, et al. *Nucleic Acids Res*. 26(15):3453-9 (1998).
- 5) Bond GL, et al. *Cell*. 119(5):591-602 (2004).

* CE IVD only available in certain countries. All other countries are either ASR or RUO. Please contact your local dealer or our headquarters for more information.

DCN032

© CytoTest Inc.



CytoTest Inc.
1395 Piccard Drive, Suite 308
Rockville, MD 20850, USA