

## RELA/CCP11 FISH Probe Kit

### Introduction

The RELA/CCP11 FISH Probe Kit is designed to detect the human *RELA* gene located on chromosome band 11q13.1, along with the number of chromosome 11 copies per cell. Altered expression of this gene – also known as *p65*, *CMCU*, *NFKB3* or *AIF3BL3* – has been observed in a number of lymphoid tumors and some solid tissue carcinomas.

### Intended Use

To measure the copy number of the human *RELA* gene located on chromosome band 11q13.1.

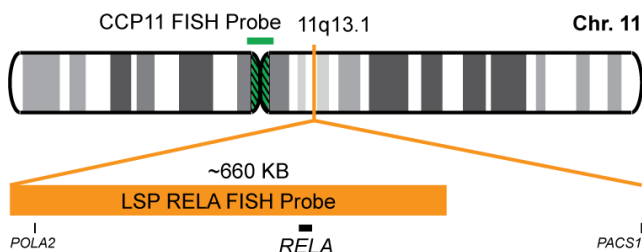
### Cont.

LSP RELA FISH Probe  
CCP11 FISH Probe

### Color

CytoOrange  
CytoGreen

### Probe Design



Not to Scale

LSP RELA FISH Probe covers a chromosomal region, which includes the entire *RELA* gene and some 5' and 3' adjacent genomic sequences. CCP11 FISH Probe, derived from chromosome 11-specific alpha satellite DNA, is designed to serve as a control to determine the number of chromosome 11 copies per cell.

### Cat. No.

CT-PAC398-10-OG

### Volume

10 Tests (100 µL)

### Signal Pattern Interpretation

#### Normal Patterns

202G

#### Abnormal Patterns

Other Patterns

- 1) Ghosh S, et al. *Annu. Rev. Immunol.* 16:225-60 (1998).
- 2) Rayet B & Gelinas C, *Oncogene* 18(49):6938-47 (1999).
- 3) Van Den Berghe H, et al. *Cancer* 44(1):188-95 (1979).
- 4) Fukuoka K, et al. *Acta Neuropathol. Commun.* 6(1):134 (2018).
- 5) Pages M, et al. *Brain Pathol.* 29(3):325-35 (2019).

\* CE IVD only available in certain countries. All other countries are either ASR or RUO. Please contact your local dealer or our headquarters for more information.

DCN032

© CytoTest Inc.



CytoTest Inc.  
1395 Piccard Drive, Suite 308  
Rockville, MD 20850, USA