

TFG Break Apart FISH Probe Kit

Introduction

The TFG Break Apart FISH Probe Kit is designed to detect rearrangements in the human TFG gene located on chromosome band 3q12.2. In addition to revealing breaks, which can lead to translocation of parts of the gene, inversion, or its fusion to other genes, the probe set can also be used to identify other TFG aberrations such as deletions or amplifications. Rearrangements and abnormal expression of the TFG gene – also known as TF6, HMSNP, SPG57 or TRKT3 – have been observed in anaplastic large cell lymphoma, thyroid papillary carcinoma, extraskelatal myxoid chondrosarcoma, renal cell carcinoma and other cancer types.

Intended Use

To detect rearrangements in the human *TFG* gene located on chromosome band 3q12.2.

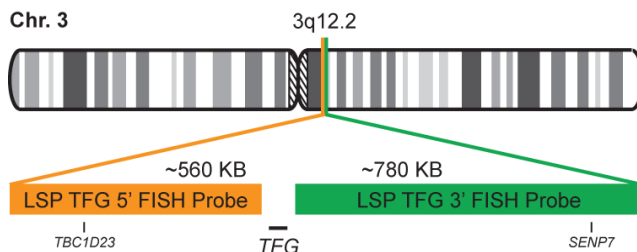
Cont.

Color

LSP TFG 5' FISH Probe
LSP TFG 3' FISH Probe

CytoOrange
CytoGreen

Probe Design



Not to Scale

LSP TFG 5' FISH Probe covers some genomic sequences adjacent to the 5' (start) portion of the *TFG* gene. LSP TFG 3' FISH Probe covers some sequences downstream of the 3' end of the gene. The two probes are flanking sequences across the *TFG* gene in which various breakpoints have been observed.

Cat. No.

Volume

CT-PAC042-10-OG

10 Tests (100 µL)

Signal Pattern Interpretation

Normal Patterns

2F*

Abnormal Patterns

Other Patterns

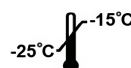
*Overlapping orange and green signals can appear as yellow.

- 1) Greco A, et al. *Mol Cell Biol.* 15(11):6118-27 (1995).
- 2) Mencinger M, et al. *Genomics.* 41(3):327-31 (1997).
- 3) Hernández L, et al. *Blood.* 94(9):3265-8 (1999).
- 4) Hernández L, et al. *Am J Pathol.* 160(4):1487-94 (2002).
- 5) Hisaoka M, et al. *Genes Chromosomes Cancer.* 40(4):325-8 (2004).

* CE IVD only available in certain countries. All other countries are either ASR or RUO. Please contact your local dealer or our headquarters for more information.

DCN032

© CytoTest Inc.



CytoTest Inc.
1395 Piccard Drive, Suite 308
Rockville, MD 20850, USA