

## FGFR3 Break Apart FISH Probe Kit

### Introduction

The FGFR3 Break Apart FISH Probe Kit is designed to detect rearrangements in the human FGFR3 gene located on chromosome band 4p16.3. In addition to revealing breaks, which can lead to translocation of parts of the gene, inversion, or its fusion to other genes, the probe set can also be used to identify other FGFR3 aberrations such as deletions or amplifications. Rearrangements and abnormal expression of the FGFR3 gene – also known as ACH, CEK2, JTK4, CD333 or HSFGR3EX – have been observed in multiple myeloma, cervical and bladder cancer and other malignancies.

### Intended Use

To detect rearrangements in the human *FGFR3* gene located on chromosome band 4p16.3.

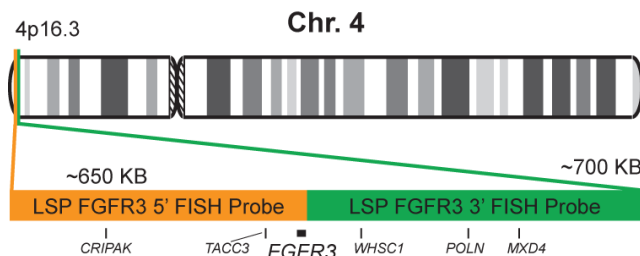
### Cont.

### Color

LSP FGFR3 5' FISH Probe  
LSP FGFR3 3' FISH Probe

CytoOrange  
CytoGreen

### Probe Design



Not to Scale

LSP FGFR3 5' FISH Probe covers the 5' (start) portion of the *FGFR3* gene and some adjacent genomic sequences. LSP FGFR3 3' FISH Probe covers the 3' (end) part as well as sequences downstream of the gene. The two probes are flanking sequences across the *FGFR3* gene in which variable breakpoints have been observed.

### Cat. No.

### Volume

CT-PAC329-10-OG

10 Tests (100 µL)

### Signal Pattern Interpretation

#### Normal Patterns

2F\*

#### Abnormal Patterns

Other Patterns

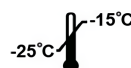
\*Overlapping orange and green signals can appear as yellow.

- 1) O'Connor C. *Nature Education*. 1(1):171 (2008).
- 2) Rousseau F, et al. *Nature*. 371(6494):252-4 (1994).
- 3) Webster MK & Donoghue DJ. *Trends Genet*. 13(5):178-82 (1997).
- 4) Chesi M, et al. *Nat Genet*. 16(3):260-4 (1997).
- 5) Richelda R, et al. *Blood*. 1997 Nov 15;90(10):4062-70 (1997).

\* CE IVD only available in certain countries. All other countries are either ASR or RUO. Please contact your local dealer or our headquarters for more information.

DCN032

© CytoTest Inc.



CytoTest Inc.  
1395 Piccard Drive, Suite 308  
Rockville, MD 20850, USA