

TCL1A Break Apart FISH Probe Kit

Introduction

The TCL1A Break Apart FISH Probe Kit is designed to detect rearrangements in the human TCL1A gene located on chromosome band 14q32.13. In addition to revealing breaks, which can lead to translocation of parts of the gene, inversion, or its fusion to other genes, the probe set can also be used to identify other TCL1A aberrations such as deletions or amplifications. Rearrangements and abnormal expression of the TCL1A gene – also known as TCL1 – have been observed in T-cell leukemias and other malignancies.

Intended Use

To detect rearrangements in the human *TCL1A* gene located on chromosome band 14q32.13.

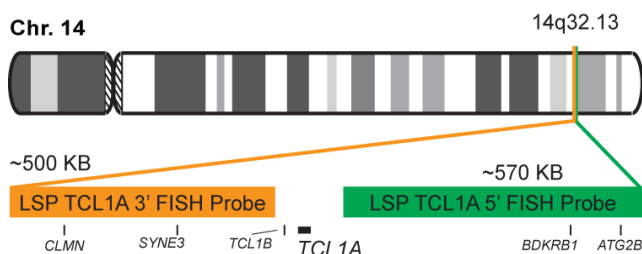
Cont.

Color

LSP TCL1A 5' FISH Probe
LSP TCL1A 3' FISH Probe

CytoGreen
CytoOrange

Probe Design



Not to Scale

LSP TCL1A 5' FISH Probe covers the genomic sequences adjacent to the 5' (start) portion of the *TCL1A* gene. LSP TCL1A 3' FISH Probe covers some sequences downstream of the 3' end of the gene. The two probes are flanking sequences across the *TCL1A* gene in which variable breakpoints have been observed.

Cat. No.

Volume

CT-PAC096-10-GO

10 Tests (100 µL)

Signal Pattern Interpretation

Normal Patterns

2F*

Abnormal Patterns

Other Patterns

*Overlapping orange and green signals can appear as yellow.

- 1) Fu TB, et al. *Cancer Res.* 54(24):6297-301 (1994).
- 2) Virgilio L, et al. *Proc Natl Acad Sci U S A.* 91(26):12530-4 (1994).
- 3) Narducci MG, et al. *Blood.* 86(6):2358-64 (1995).
- 4) Thick J, et al. *Oncogene.* 12(2):379-86 (1996).
- 5) Narducci MG, et al. *Cancer Res.* 57(24):5452-6 (1997).

* CE IVD only available in certain countries. All other countries are either ASR or RUO. Please contact your local dealer or our headquarters for more information.

DCN032

© CytoTest Inc.



CytoTest Inc.
1395 Piccard Drive, Suite 308
Rockville, MD 20850, USA