

RREB1/MYB/CCP6/CCND1 FISH Probe Kit

Introduction

The RREB1/MYB/CCP6/CCND1 FISH Probe Kit is designed to detect the human RREB1, MYB and CCND1 genes located on chromosome bands 6p24.3, 6q23.3 and 11q13.3, respectively, along with the number of chromosome 6 copies per cell. Abnormal expression of the RREB1 gene – also known as Zep-1, RREB-1, LZ321, HNT or FINB –, the MYB gene – also called efg, Cmyb, c-myb or c-myb_CDS – and the CCND1 gene – also recognized as BCL1, D11S287E, PRAD1 or U21B31 – have been observed in colorectal and pancreatic cancer, melanoma and other malignancies.

Intended Use

To measure the copy number of the human RREB1, MYB and CCND1 genes located on chromosome band 6p24.3, 6q23.3 and 11q13.3, respectively, .

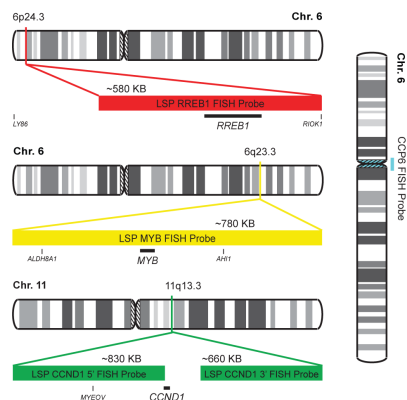
Cont.

Color

LSP RREB1 FISH Probe
LSP MYB FISH Probe
CCP6 FISH Probe
LSP CCND1 5'-3' FISH Probe

CytoRed
CytoGold
CytoAqua
CytoGreen

Probe Design



LSP RREB1 FISH Probe covers a chromosomal region which includes the entire *RREB1* gene. LSP MYB FISH Probe covers a chromosomal region which includes the entire *MYB* gene. CCP6 FISH Probe, derived from chromosome 6-specific alpha satellite DNA, is designed to serve as a control to determine the number of chromosome 6 copies per cell. LSP CCND1 5'-3' FISH Probe covers chromosomal regions upstream (5') and downstream (3') of the *CCND1* gene.

Cat. No.

Volume

CT-PAC249-10-RYAG

10 Tests (100 µL)

Signal Pattern Interpretation

Normal Patterns

2R2Y2A2G

Abnormal Patterns

Other Patterns

- Gerami P, et al. *Arch Dermatol.* 146(3):273-8 (2010).
- Newman MD, et al. *Mod Pathol.* 22(8):989-95 (2009).
- Curtin JA, et al. *N Engl J Med.* 353(20):2135-47 (2005).
- Bastian BC, et al. *Am J Pathol.* 163(5):1765-70 (2003).
- Corona R, et al. *J Clin Oncol.* 14(4):1218-23 (1996).

* CE IVD only available in certain countries. All other countries are either ASR or RUO. Please contact your local dealer or our headquarters for more information.

DCN032

© CytoTest Inc.

www.cytotest.com



CytoTest Inc.
1395 Piccard Drive, Suite 308
Rockville, MD 20850, USA

V2025.03.01

T-07-10-PAC249-RYAG-EN