

BRCA2/CCP13 FISH Probe Kit

Introduction

The BRCA2/CCP13 FISH Probe Kit is designed to detect the human *BRCA2* gene located on chromosome band 13q13.1 along with the number of CCP13 copies per cell. Germline mutations of this gene – also known as *FAD*, *FACD*, *FAD1*, *GLM3*, *BRCC2*, *FANCD*, *PNCA2*, *FANCD1*, *XRCC11*, *BROVCA2* – are associated with high risk breast and ovarian cancers and are also found in prostate, skin, bone, pancreatic, gastrointestinal and many other solid tumor types. Biallelic mutations are found in Fanconi anemia.

Intended Use

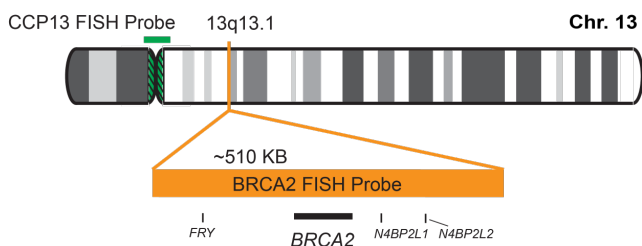
To measure the copy number of the human *BRCA2* gene located on chromosome band 13q13.1.

Cont.

Color

LSP BRCA2 FISH Probe CytoOrange
CCP13 (Pericentromeric) FISH Probe CytoGreen

Probe Design



Not to Scale

LSP BRCA2 FISH Probe covers a chromosomal region which includes the entire *BRCA2* gene and some flanking genomic sequences. CCP13 FISH probe is designed to serve as a control to determine the number of chromosome 13 copies per cell.

Cat. No.

Volume

CT-PAC431-10-OG

10 Tests (100 µL)

Signal Pattern Interpretation

Normal Patterns

202G

Abnormal Patterns

Other Patterns

1. Thompson D, et al. *Am. J. Hum. Genet.* 68(2):410-9 (2001).
2. Tryggvadóttir L, et al. *J. Natl. Cancer Inst.* 99(12):929-35 (2007).
3. Wagner JE, et al. *Blood.* 103(8):3226-9 (2004).
4. Wooster R, et al. *Science.* 265(5181):2088-90 (1994).
5. van Asperen CJ, et al. *J. Med. Genet.* 42(9):711-9 (2005).



CytoTest Inc.
1395 Piccard Drive, Suite 308
Rockville, MD 20850, USA

* CE IVD only available in certain countries. All other countries are either ASR or RUO. Please contact your local dealer or our headquarters for more information.

DCN032

© CytoTest Inc.

www.cytotest.com

V2023.01.02
T-07-10-PAC431-OG-EN