

TLX1 Break Apart FISH Probe Kit

Introduction

The TLX1 Break Apart FISH Probe Kit is designed to detect rearrangements in the human TLX1 gene located on chromosome band 10q24.31. In addition to revealing breaks, which can lead to translocation of parts of the gene, inversion, or its fusion to other genes, the probe set can also be used to identify other TLX1 aberrations such as deletions or amplifications. Rearrangements and abnormal expression of the TLX1 gene – also known as TCL3 or HOX11 – have been observed in acute lymphoblastic leukemia (ALL), non-Hodgkin lymphoma (NHL) and other malignancies.

Intended Use

To detect rearrangements in the human *TLX1* gene located on chromosome band 10q24.31.

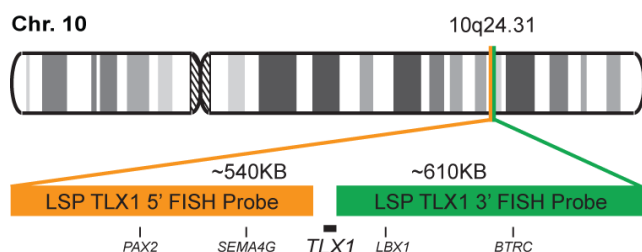
Cont.

Color

LSP TLX1 5' FISH Probe
LSP TLX1 3' FISH Probe

CytoOrange
CytoGreen

Probe Design



Not to Scale

LSP TLX1 5' FISH Probe covers some genomic sequences adjacent to the 5' end of the *TLX1* gene. LSP TLX1 3' FISH Probe covers some sequence downstream of the 3' end of the gene. The two probes are flanking sequences across the *TLX1* gene in which variable breakpoints have been observed.

Cat. No.

Volume

CT-PAC194-10-OG

10 Tests (100 µL)

Signal Pattern Interpretation

Normal Patterns

2F*

Abnormal Patterns

Other Patterns

*Overlapping orange and green signals can appear as yellow.

- 1) Dubé ID, et al. *Blood*. 67(4):1181-4 (1986).
- 2) Kennedy MA, et al. *Proc Natl Acad Sci U S A*. 88(20):8900-4 (1991).
- 3) Hatano M, et al. *Science*. 253(5015):79-82 (1991).
- 4) Kagan J, et al. *Cancer Res*. 54(1):226-30 (1994).
- 4) Lichty BD, et al. *Leuk Lymphoma*. 16(3-4):209-15 (1995).

* CE IVD only available in certain countries. All other countries are either ASR or RUO. Please contact your local dealer or our headquarters for more information.

DCN032

© CytoTest Inc.



CytoTest Inc.
1395 Piccard Drive, Suite 308
Rockville, MD 20850, USA