

ELN/CUX1 FISH Probe Kit

Introduction

The ELN/CUX1 FISH Probe Kit is designed to detect the human *ELN* gene located on chromosome band 7q11.23 and the *CUX1* gene on chromosome band 7q22.1. Abnormal expression due to gains or losses of the *ELN* gene – also known as *WS*, *WBS*, *SVAS* or *ADCL1* – has been observed in prostate carcinomas well as other malignancies. The *ELN* gene is frequently deleted in Williams Syndrome (WS) individuals. Abnormalities in *CUX1* – also known as *p75*, *p200*, *p110*, *Nbla10317*, *GOLIM6*, *FLJ31745*, *Cux/CDP*, *Clox*, *CUX*, *CUTL1*, *COY1*, *CDP1*, *CDP/Cut*, *CDP* or *CASP* – has been observed elevated in pancreatic, breast and other cancers.

Intended Use

To measure the copy number of the human *ELN* gene located on chromosome band 7q11.23 and the *CUX1* gene on chromosome band 7q22.1.

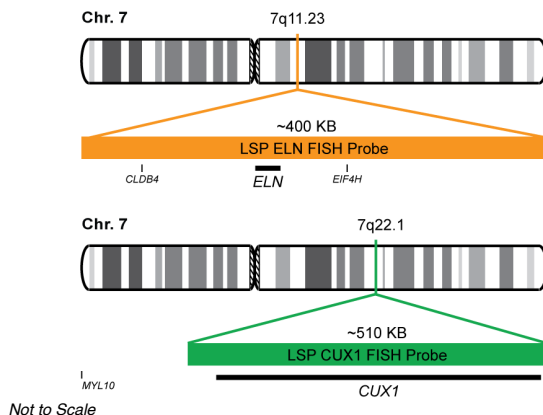
Cont.

LSP ELN FISH Probe
LSP CUX1 FISH Probe

Color

CytoOrange
CytoGreen

Probe Design



LSP ELN FISH Probe covers a chromosomal region, which includes the entire *ELN* gene along with some flanking genomic sequences. LSP CUX1 FISH Probe covers the entire *CUX1* gene.

Cat. No.

CT-PAC454-10-OG

Volume

10 Tests (100 µL)

Signal Pattern Interpretation

Normal Patterns

202G

Abnormal Patterns

Other Patterns

- 1) Brøndum-Nielsen K., et al. Hum. Genet. 99(1):56-61 (1997).
- 2) Pérez Jurado LA, et al. Am J. Hum. Genet. 59(4):781-92 (1996).
- 3) Lowery MC., et al. Am. J. Hum. Genet. 57(1):49-53 (1995).
- 4) Leme DE, et al., Genet. Mol. Res. 12(3):3407-11 (2013).
- 5) Morris CA, Williams Syndrome. - In Adam MP, et al. (ed.s).
- 6) GeneReviews® [Internet]. Seattle (WA): University of Washington, Seattle; 1993-2019 1999 Apr 9 [updated 2017 Mar 23].

* CE IVD only available in certain countries. All other countries are either ASR or RUO. Please contact your local dealer or our headquarters for more information.

DCN032

© CytoTest Inc.

www.cytotest.com



CytoTest Inc.
1395 Piccard Drive, Suite 308
Rockville, MD 20850, USA

V2024.09.01

T-07-10-PAC454-OG-EN