

## CUX1/CCP7 FISH Probe Kit

### Introduction

The CUX1/CCP7 FISH Probe Kit is designed to detect the human CUX1 gene located on chromosome bands 7q22.1, along with the number of chromosome 7 copies per cell. Abnormalities in CUX1 – also known as p75, p200, p110, Nbla10317, GOLIM6, FLJ31745, Cux/CDP, Clox, CUX, CUTL1, COY1, CDP1, CDP/Cut, CDP, or CASP – has been observed elevated in pancreatic, breast and other cancers.

### Intended Use

To measure the copy number of the human *CUX1* gene located on chromosome band 7q22.1.

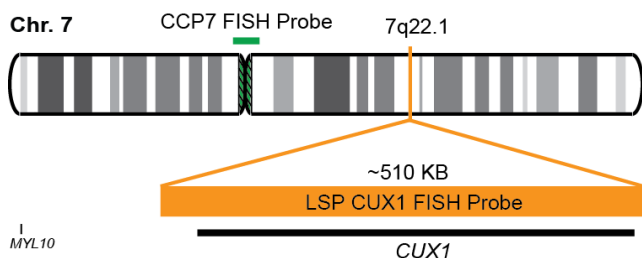
### Cont.

### Color

LSP CUX1 FISH Probe  
CCP7 FISH Probe

CytoOrange  
CytoGreen

### Probe Design



Not to Scale

LSP CUX1 FISH Probe covers a chromosomal region which includes the entire *CUX1* gene. CCP7 FISH Probe, derived from chromosome 7-specific alpha satellite DNA, is designed to serve as a control to determine the number of chromosome 7 copies per cell.

### Cat. No.

### Volume

CT-PAC128-10-OG

10 Tests (100 µL)

### Signal Pattern Interpretation

#### Normal Patterns

202G

#### Abnormal Patterns

Other Patterns

- 1) De Vos J, et al. *Oncogene*. 21(44):6848-57 (2002).
- 2) Goulet B, et al. *Cancer Res*. 62(22):6625-33 (2002).
- 3) Tsutsumi S, et al. *Cancer Res*. 63(16):4882-7 (2003).
- 4) Thoenissen NH, et al. *Am J Hematol*. 86(8):703-5 (2011).
- 5) Moody TW, et al. *Ann N Y Acad Sci*. 921:26-32 (2000).

\* CE IVD only available in certain countries. All other countries are either ASR or RUO. Please contact your local dealer or our headquarters for more information.

DCN032

© CytoTest Inc.



CytoTest Inc.  
1395 Piccard Drive, Suite 308  
Rockville, MD 20850, USA