

RB1/ATM FISH Probe Kit

Introduction

The RB1/ATM FISH Probe Kit is designed to detect the human RB1 gene, located on chromosomes band 13q14.2, and the ATM gene on chromosome band 11q22.3. Abnormal expression of the RB1 gene has been observed in retinoblastoma, soft tissue and bone sarcomas and various other cancers. Misregulation or deletion of both genes has been seen in chronic lymphocytic leukemia (CLL) and other tumor types.

Intended Use

To detect the human *RB1* gene, located on chromosomes band 13q14.2, and the *ATM* gene on chromosome band 11q22.3.

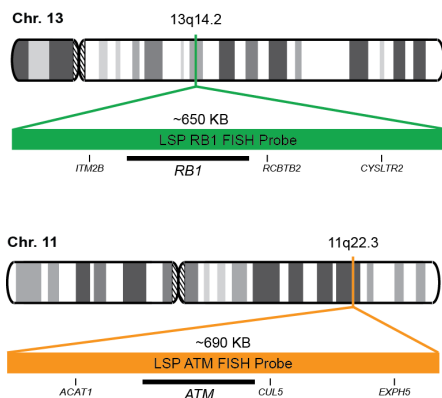
Cont.

Color

LSP RB1 FISH Probe
LSP ATM FISH Probe

CytoGreen
CytoOrange

Probe Design



LSP RB1 FISH Probe covers a chromosomal region which includes the entire *RB1* gene. LSP ATM FISH Probe covers a chromosomal region around *ATM* gene located at 11q22.3.

Cat. No.

Volume

CT-PAC364-10-GO

10 Tests (100 µL)

Signal Pattern Interpretation

Normal Patterns

2O2G

Abnormal Patterns

Other Patterns

- 1) Toguchida J, et al. *Genomics*. 17(3):535-43 (1993).
- 2) Weinberg RA. *Cell*. 81(3):323-30 (1995).
- 3) Taya Y. *Trends Biochem Sci*. 22(1):14-7 (1997).
- 4) Tsimberidou AM, et al. *Cancer*. 115(2):373-80 (2009).
- 5) Caraway NP, et al. *Cancer*. 2008 Oct 25;114(5):315-22 (2008).

* CE IVD only available in certain countries. All other countries are either ASR or RUO. Please contact your local dealer or our headquarters for more information.

DCN032

© CytoTest Inc.



CytoTest Inc.
1395 Piccard Drive, Suite 308
Rockville, MD 20850, USA