

ZNF217/CCP20 FISH Probe Kit

Introduction

The ZNF217/CCP20 FISH Probe Kit is designed to detect the human ZNF217 gene located on chromosome band 20q13.2, along with the number of chromosome 20 copies per cell. Abnormal expression of the ZNF217 gene – also known as ZABC1 – has been observed in breast and larynx cancer and other tumor types.

Intended Use

To measure the copy number of the human *ZNF217* gene located on chromosome band 20q13.2.

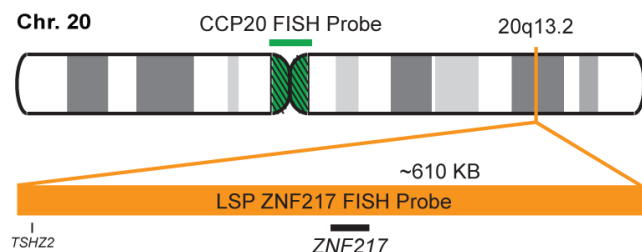
Cont.

Color

LSP ZNF217 FISH Probe
CCP20 FISH Probe

CytoOrange
CytoGreen

Probe Design



LSP ZNF217 FISH Probe covers a chromosomal region which includes the entire *ZNF217* gene. CCP20 FISH Probe, derived from chromosome 20-specific alpha satellite DNA, is designed to serve as a control to determine the number of chromosome 20 copies per cell.

Not to Scale

Cat. No.

Volume

CT-PAC073-10-OG

10 Tests (100 µL)

Signal Pattern Interpretation

Normal Patterns

202G

Abnormal Patterns

Other Patterns

- Collins C, et al. *Proc Natl Acad Sci U S A*. 95(15):8703-8 (1998).
- Rooney PH, et al. *J Pathol*. 204(3):282-8 (2004).
- Chin K, et al. *Nat Genet*. 36(9):984-8 (2004).
- Shimada M, et al. *Oncol Rep*. 13(4):633-41 (2005).

* CE IVD only available in certain countries. All other countries are either ASR or RUO. Please contact your local dealer or our headquarters for more information.

DCN032

© CytoTest Inc.



CytoTest Inc.
1395 Piccard Drive, Suite 308
Rockville, MD 20850, USA