

## AFF1 Break Apart FISH Probe Kit

### Introduction

The AFF1 Break Apart FISH Probe Kit is designed to detect rearrangements in the human AFF1 gene located on chromosome band 4q21.3. In addition to revealing breaks, which can lead to translocation of parts of the gene, inversion, or its fusion to other genes, the probe set can also be used to identify other AFF1 aberrations such as deletions or amplifications. Rearrangements and abnormal expression of the AFF1 gene – also known as AF4, PBM1 or MLLT2 – have been observed in B-cell acute lymphocytic leukemias and numerous other hematological malignancies.

### Intended Use

To detect rearrangements in the human *AFF1* gene located on chromosome band 4q21.3.

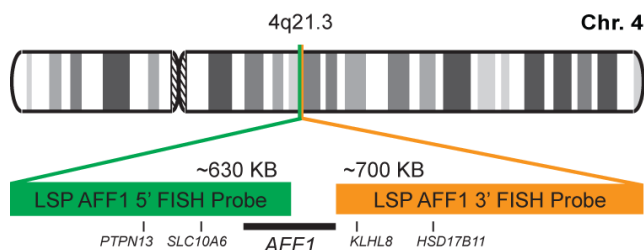
### Cont.

### Color

LSP AFF1 5' FISH Probe  
LSP AFF1 3' FISH Probe

CytoGreen  
CytoOrange

### Probe Design



LSP AFF1 5' FISH Probe covers the 5' (start) portion of the *AFF1* gene and some adjacent genomic sequences. LSP AFF1 3' FISH Probe covers the 3' (end) part as well as sequences downstream of the gene. The two probes are flanking a region in the *AFF1* gene in which variable breakpoints have been observed.

Not to Scale

### Cat. No.

### Volume

CT-PAC330-10-GO

10 Tests (100 µL)

### Signal Pattern Interpretation

#### Normal Patterns

2F\*

#### Abnormal Patterns

Other Patterns

\*Overlapping orange and green signals can appear as yellow.

- 1) Gu Y, et al. *Cell*. 71(4):701-8 (1992).
- 2) Young BD & Saha V. *Cancer Surv*. 28:225-45 (1996).
- 3) Bernard OA & Berger R. *Genes Chromosomes Cancer*. 13(2):75-85 (1995).
- 4) Rubnitz JE, et al. *Leukemia*. 10(1):74-82 (1996).
- 5) Nilson I, et al. *Br J Haematol*. 98(1):157-69 (1997).

\* CE IVD only available in certain countries. All other countries are either ASR or RUO. Please contact your local dealer or our headquarters for more information.

DCN032

© CytoTest Inc.



CytoTest Inc.  
1395 Piccard Drive, Suite 308  
Rockville, MD 20850, USA