

D13S25/TP53 FISH Probe Kit

Introduction

The D13S25/TP53 FISH Probe Kit is designed to detect the human D13S25 marker region located on chromosome band 13q14.3 and the human TP53 gene located on chromosome band 17p13.1. Abnormalities in the two regions are commonly found in hematological and solid tumor types.

Intended Use

To detect the human D13S25 marker region located on chromosome band 13q14.3 and the human TP53 gene located on chromosome band 17p13.1

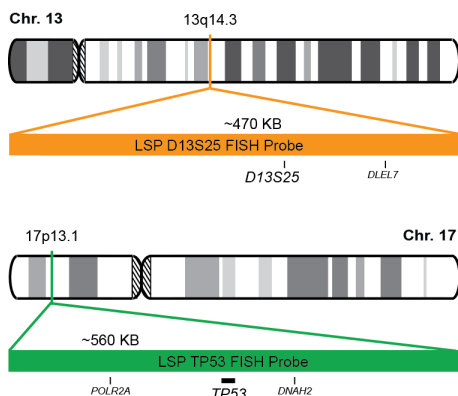
Cont.

Color

LSP D13S25 FISH Probe
LSP TP53 FISH Probe

CytoOrange
CytoGreen

Probe Design



LSP D13S25 FISH Probe covers a chromosomal region around D13S25 STS marker on chromosome 13. LSP TP53 FISH Probe covers a chromosomal region which includes the entire TP53 gene.

Cat. No.

Volume

CT-PAC363-10-OG

10 Tests (100 µL)

Signal Pattern Interpretation

Normal Patterns

202G

Abnormal Patterns

Other Patterns

- 1) Kujawski M, et al. Cancer Genet Cytogenet. 137(1):54-8 (2002).
- 2) Yuregir OO, et al. Hematology. 14(2):90-4 (2009).
- 3) Kwon WK, et al. Korean J Hematol. 45(3):171-6 (2010).
- 4) Cavazzini F, et al. Leuk Lymphoma. 53(1):83-8 (2012).
- 5) Wu W, et al. Zhongguo Shi Yan Xue Ye Xue Za Zhi. 20(5):1095-8 (2012).

* CE IVD only available in certain countries. All other countries are either ASR or RUO. Please contact your local dealer or our headquarters for more information.

DCN032

© CytoTest Inc.



CytoTest Inc.
1395 Piccard Drive, Suite 308
Rockville, MD 20850, USA