

CCPX, Y, 21 FISH Probe Kit

Introduction

This CytoTest FISH probe set is designed to simultaneously determine the copy number of human chromosomes 21, X and Y, and to detect copy number aberrations in these chromosomes, in metaphase and interphase blood and tissue cells. The panel contains three different probes:

CCPX is derived from X-chromosome specific alpha satellite DNA (Xp11.1-q11.1, DXZ1).

CCPY is derived from Y chromosome specific centromeric (Yp11.1-q11.1) alpha satellite DNA (DYZ3).

CCP21 is a probe covering the DSCR8 gene locus located on chromosome band 21q22.2.

Intended Use

To determine the copy number of human chromosomes 21, X and Y, and to detect copy number aberrations in these chromosomes, in metaphase and interphase blood and tissue cells.

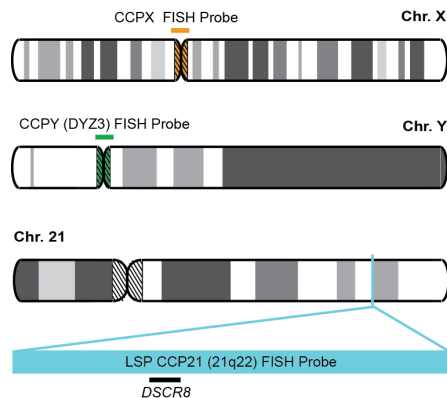
Cont.

Color

CCPX FISH Probe
CCPY (DYZ3) FISH Probe
CCP21 (21q22) FISH Probe

CytoOrange
CytoGreen
CytoAqua

Probe Design



Not to Scale

The panel contains three different probes:

CCPX is derived from X-chromosome specific alpha satellite DNA (Xp11.1-q11.1, DXZ1).

CCPY is derived from Y chromosome specific centromeric (Yp11.1-q11.1) alpha satellite DNA (DYZ3).

CCP21 is a probe covering the DSCR8 gene locus located on chromosome band 21q22.2.

Cat. No.

Volume

CT-PAC344-10-OGA

10 Tests (100 µL)

Signal Pattern Interpretation

Normal Patterns

2O2G2A

Abnormal Patterns

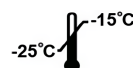
Other Patterns

- 1) Schwartz S. Am J Hum Genet 52:851-853 (1993).
- 2) Lewin P, et al. Prenat Diagn 20(1):1-6 (2000).
- 3) Tepperberg J, et al. Prenat Diagn 21(4):293-301 (2001).
- 4) ACMG/ASHG. Genetics in Medicine 2(6):356 – 361 (2000).
- 5) Stumm M, et al. Cytogenet Genome Res 114(3-4):296-301 (2006).

* CE IVD only available in certain countries. All other countries are either ASR or RUO. Please contact your local dealer or our headquarters for more information.

DCN032

© CytoTest Inc.



CytoTest Inc.
1395 Piccard Drive, Suite 308
Rockville, MD 20850, USA