

## TP73/ABL2 FISH Probe Kit

### Introduction

The TP73/ABL2 FISH Probe FISH Probe Kit is designed to simultaneously detect rearrangements involving the human TP73 and ABL2 genes, located on chromosome bands 1p36.32 and 1q25.2, respectively. Deletions and other abnormalities of these regions have been observed in gliomas, astrocytomas and various other malignancies.

### Intended Use

To measure the copy number of the human TP73 and ABL2 genes located on chromosome band 1p36.32 and 1q25.2, respectively.

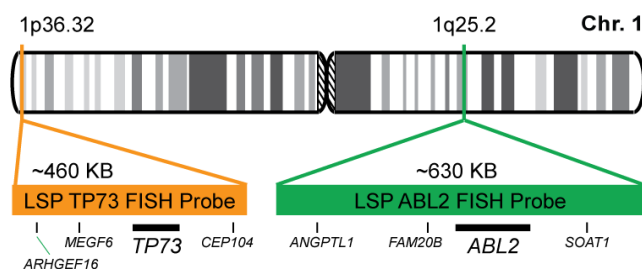
### Cont.

### Color

LSP TP73 FISH Probe  
LSP ABL2 FISH Probe

CytoOrange  
CytoGreen

### Probe Design



LSP TP73 FISH Probe covers a chromosomal region which includes the entire TP73 gene. LSP ABL2 FISH Probe covers a region on chromosomal band 1q25.2 including the entire ABL2 gene.

Not to Scale

### Cat. No.

### Volume

CT-PAC461-10-OG

10 Tests (100 µL)

### Signal Pattern Interpretation

#### Normal Patterns

202G

#### Abnormal Patterns

Other Patterns

- 1) O'Connor C. *Nature Education*. 1(1):171 (2008).
- 2) Ried T, et al. *Hum Mol Genet*. 7(10):1619-26 (1998).
- 3) Katoh O, et al. *Biochem Biophys Res Commun*. 249(3):595-600 (1998).
- 4) Lee SM, et al. *Life Sci*. 71(19):2267-77 (2002).
- 5) Tao YF, et al. *BMC Cancer*. 12:619 (2012).

\* CE IVD only available in certain countries. All other countries are either ASR or RUO. Please contact your local dealer or our headquarters for more information.

DCN032

© CytoTest Inc.



CytoTest Inc.  
1395 Piccard Drive, Suite 308  
Rockville, MD 20850, USA