

## TBL1XR1/CCP3 FISH Probe Kit

### Introduction

The TBL1XR1/CCP3 FISH Probe Kit is designed to detect the human *TBL1XR1* gene located on chromosome band 3q26.32, along with the number of chromosome 3 copies per cell. Rearrangements and abnormal expression of the *TBL1XR1* gene – also known as *C21*, *DC42*, *IRA1*, *MRD4* or *TBLR1* – have been observed in T-cell lymphomas and other tumor types.

### Intended Use

To measure the copy number of the human *TBL1XR1* gene located on chromosome band 3q26.32.

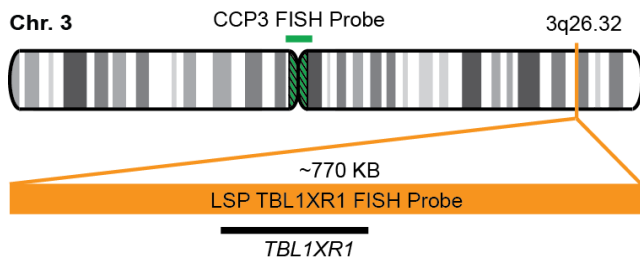
### Cont.

### Color

LSP TBL1XR1 FISH Probe  
CCP3 FISH Probe

CytoOrange  
CytoGreen

### Probe Design



LSP TBL1XR1 FISH Probe covers a chromosomal region which includes the entire *TBL1XR1* gene. CCP3 FISH Probe, derived from chromosome 3-specific alpha satellite DNA, is designed to serve as a control to determine the number of chromosome 3 copies per cell.

Not to Scale

### Cat. No.

### Volume

CT-PAC251-10-OG

10 Tests (100 µL)

### Signal Pattern Interpretation

#### Normal Patterns

2O2G

#### Abnormal Patterns

Other Patterns

- 1) O'Connor C. *Nature Education*. 1(1):171 (2008).
- 2) Tsuchiya KD. *Clin Lab Med*. 31(4):525-42, vii-viii (2011).
- 3) Ried T, et al. *Hum Mol Genet*. 7(10):1619-26 (1998).
- 4) Pons L, et al. *Am J Med Genet A*. 167A(1):164-8 (2015).
- 5) Scott DW, et al. *Blood*. 119(21):4949-52 (2012).

\* CE IVD only available in certain countries. All other countries are either ASR or RUO. Please contact your local dealer or our headquarters for more information.

DCN032

© CytoTest Inc.



CytoTest Inc.  
1395 Piccard Drive, Suite 308  
Rockville, MD 20850, USA