

20q Subtelomere FISH Probe (DNAJC5)

Introduction

The Chromosome 20q Subtelomere FISH Probe is designed to detect presence, integrity and copy number of 20q subtelomeric chromosomal regions.

Intended Use

To measure chromosome 20 copy number and presence of the intact human 20q subtelomeric chromosomal regions.

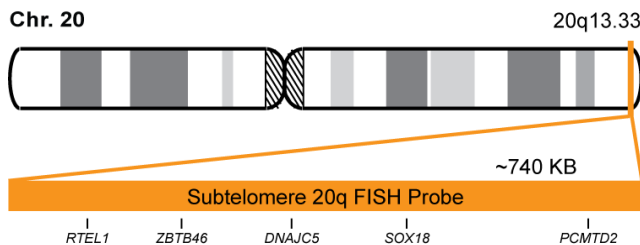
Cont.

20q Subtelomere (DNAJC5) FISH Probe

Color

CytoOrange

Probe Design



STP 20q FISH Probe covers a subtelomeric chromosomal region within locus 20q13.33.

Not to Scale

Cat. No.

CT-STP20Q-10-O

Volume

10 Tests (100 µL)

Signal Pattern Interpretation

Normal Patterns

20

Abnormal Patterns

Other Patterns

- 1) O'Connor C. *Nature Education*. 1(1):171 (2008).
- 2) Tsuchiya KD. *Clin Lab Med*. 31(4):525-42 (2011).
- 3) Ried T, et al. *Hum Mol Genet*. 7(10):1619-26 (1998).
- 4) Knight SJ & Flint J. *J Med Genet*. 37(6):401-9 (2000).
- 5) Jalal SM, et al. *Genet Med*. 5(1):28-34 (2003).

* CE IVD only available in certain countries. All other countries are either ASR or RUO. Please contact your local dealer or our headquarters for more information.

DCN032

© CytoTest Inc.



CytoTest Inc.
1395 Piccard Drive, Suite 308
Rockville, MD 20850, USA